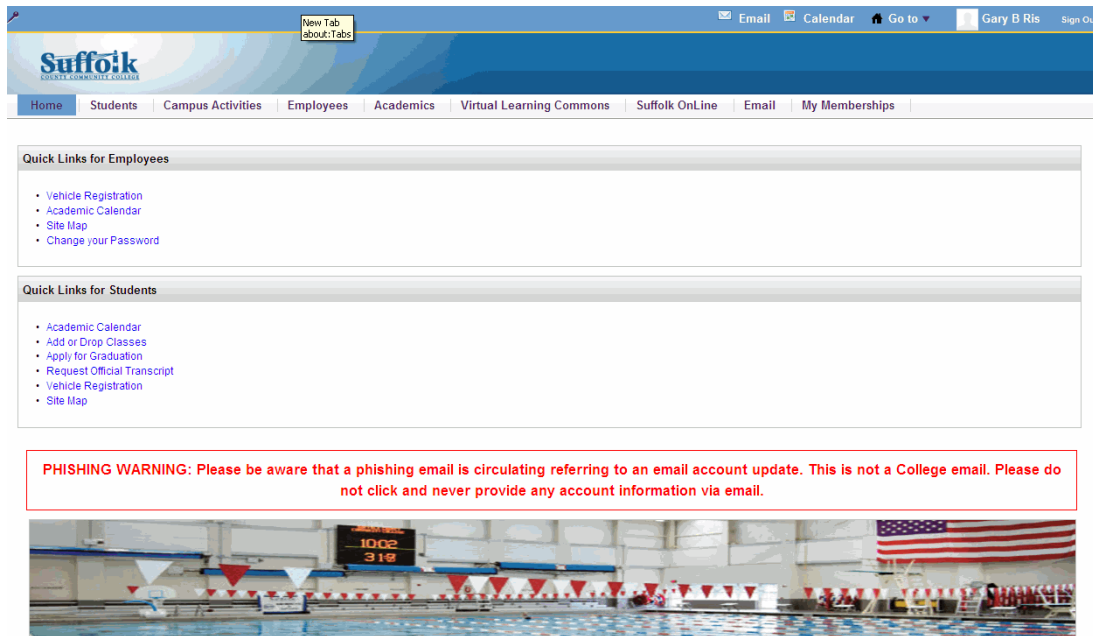


Browser Compatibility

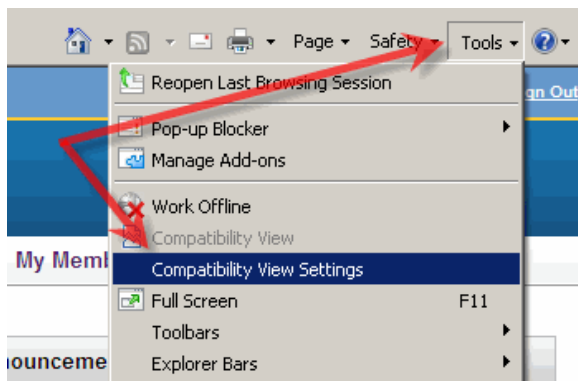
The new portal architecture uses many new Internet features. Some older Internet Browsers do not consistently display these newer features. The portal is best viewed using the latest versions of IE, Firefox or Chrome.

If you are using an older browser, the portal homepage may display in a single column as shown below. If this occurs, you may be able to see the newer features by changing your browser's Compatibility View settings.

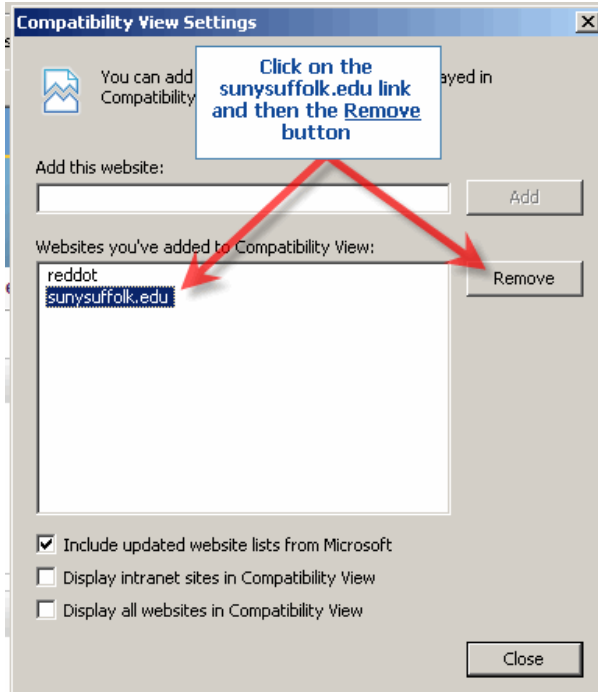


For example, in Internet Explorer 8 (IE8) you will need to remove the College's sites from compatibility view. This can be done as follows:

- Click on Tools and then Compatibility View Setting



- Next, find the College's website in the lower box and press Remove and then Close



- Also locate the Display intranet sites in Compatibility View option and remove the check if present.

