

IDENTIFYING AND FIXING A CONNECTION PROBLEM TO THE S.C.C.C. STUDENT WIRELESS NETWORK

Fall 2006

NOTE: *This document assumes that you have registered your Wireless device with the college and that at least a week has past since the registration.*

Sometimes it is necessary to add a specific Wireless Network manually on some devices before they will successfully connect to the S.C.C.C.'s Wireless Network. The following is a procedure to use when an attempt to connect to S.C.C.C.'s Wireless Network from a PC fails. Other devices may have similar tools for determining and making connections and this document can still be used as a guide in those cases.

Verify that you are not connected to the S.C.C.C. Wireless Network:

1. Right-click on "My Network Places" (either on the Desktop or on the Start Menu).
2. Left-click on Properties and a screen similar to **Figure 1** will appear. *If you see "Disabled" under "Wireless Network Connection" icon, right-click on "Wireless Network Connection" icon and choose "Enable".*
3. Double left-click on the "Wireless Network Connection" icon and a screen similar to **Figure 4** should appear. *If a similar screen does not appear, we need to confirm that the S.C.C.C. Wireless Network is being seen by your computer. Close the window that appeared and go on to step 4.*
4. Right-click on "Wireless Network Connection", left-click on "Properties", and then left-click on the "Wireless Networks" tab at top of the window. You should see "SCCC-Public" as an available network. Please see **Figure 2**. *If you do not see "SCCC-Public", go on to the next set of instructions. If you do see "SCCC-Public" and you confirmed that you are within a [coverage area](#), please visit the Academic Computing Center on your campus for further assistance.*

If you are not connected to the S.C.C.C. Wireless Network:

1. Right-click on "My Network Places" (either on the Desktop or on the Start Menu) and then left-click on Properties and a screen similar to **Figure 1** will appear.
2. Right-click on "Wireless Network Connection", left click on "Properties", and then left-click on the "Wireless Networks" tab at top of the window. Please see **Figure 2**. *Your screen will not show "SCCC-Public" in the list of available networks.*
3. Left-click on the "Add" button and a screen similar to **Figure 3** will appear.

4. Type in “SCCC-Public” in the “Network name (SSID):” field and uncheck the box next to “Data encryption (WEP enabled)”.
5. Left-click on the “OK” button. The Wireless Network should appear in the window.
6. To manually connect if you are not already, close all windows. Right-click on “My Network Places” (either on the Desktop or on the Start Menu) and then right-click on “Wireless Network Connection” and choose “View Available Wireless Networks.” A screen similar to **Figure 5** will appear.
7. Single left-click on “SCCC-Public”, check the box next to “Allow me to connect...”, and then single left-click on the “Connect” button.

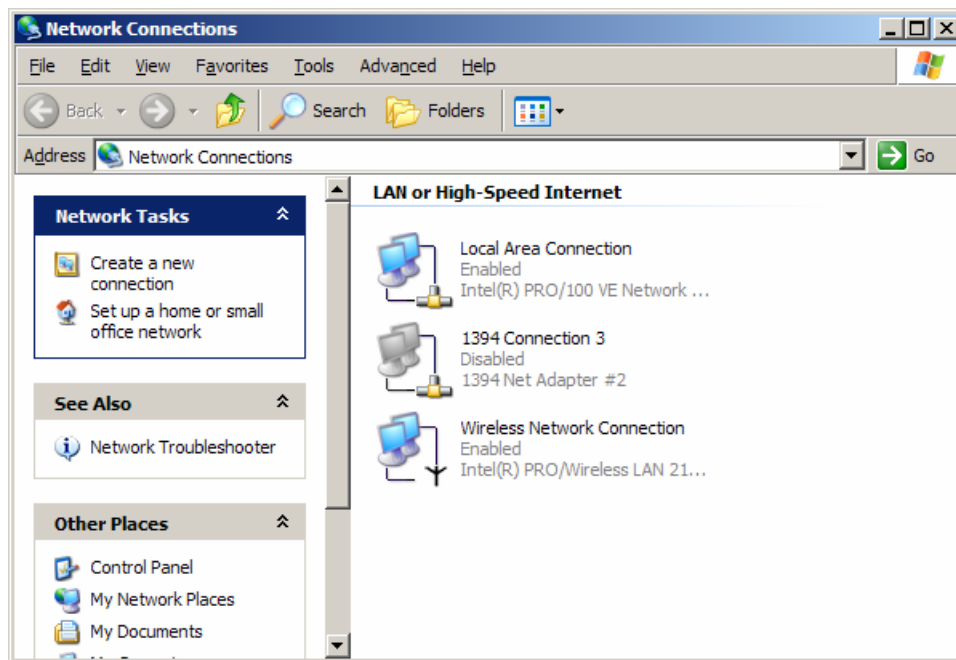


Figure 1

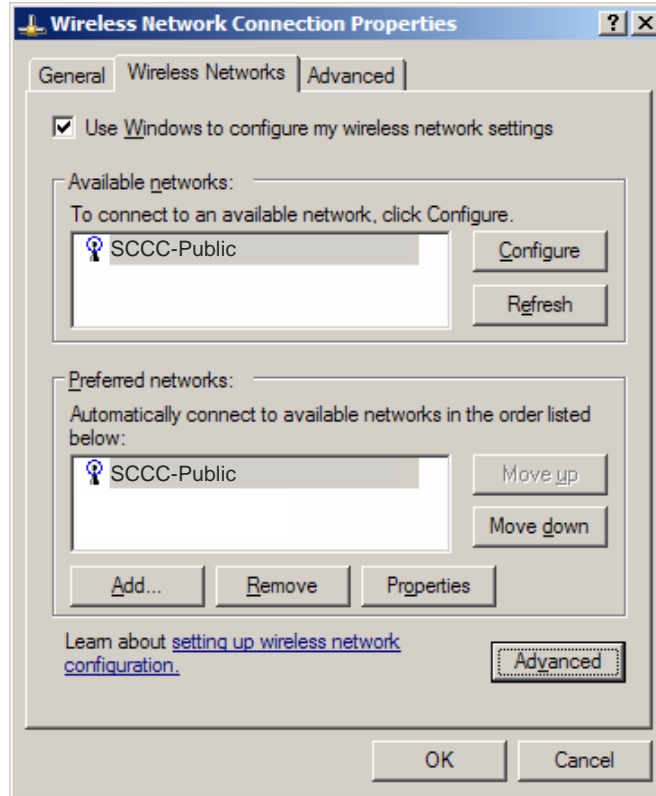


Figure 2

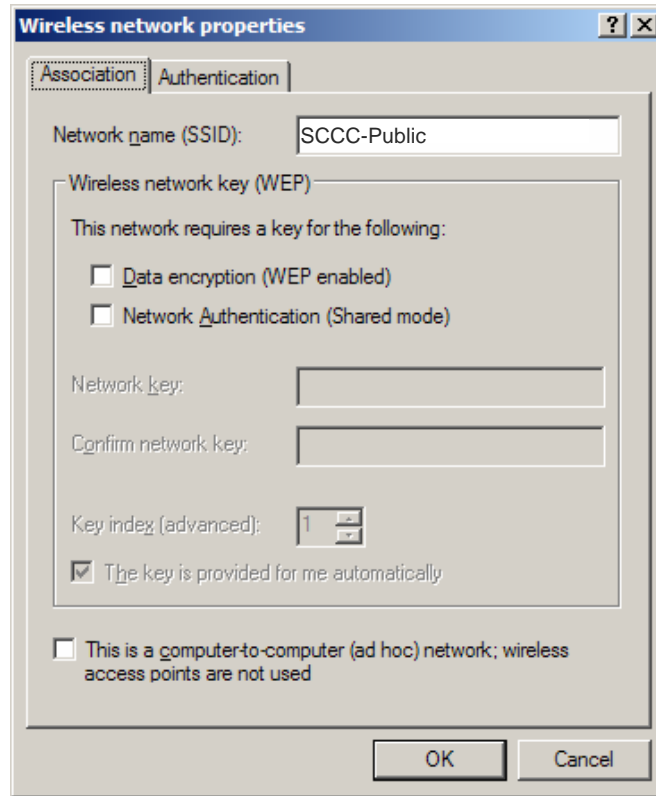


Figure 3

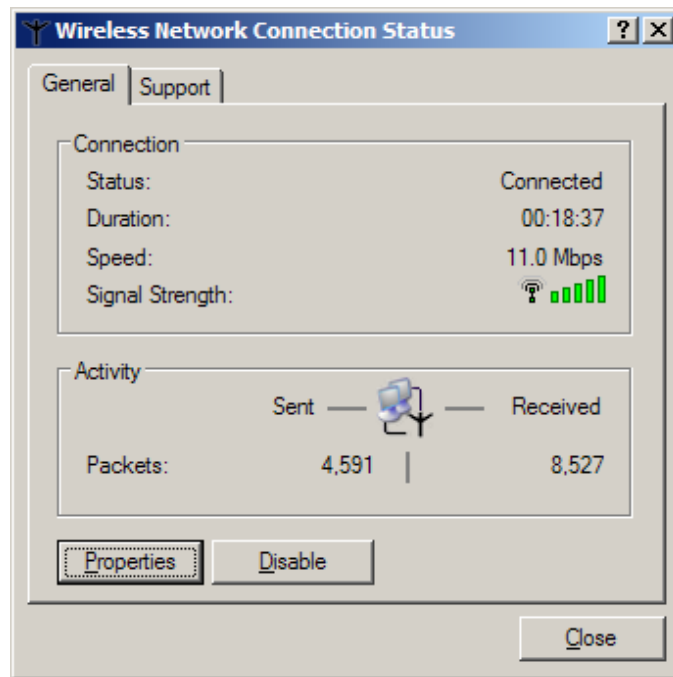


Figure 4

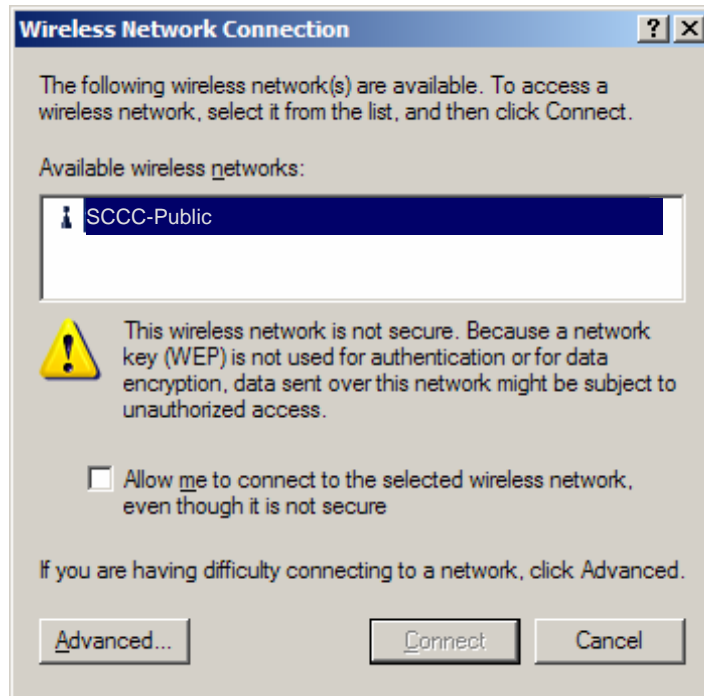


Figure 5